



**FREEHOLD**

**£339,995**



**1 CROWN MEADOW, COALWAY, COLEFORD,  
GLOUCESTERSHIRE, GL16 7HF**

- FOUR BEDROOMS (THREE OF WHICH ARE DOUBLES)
- LOUNGE
- EN-SUITE TO MASTER BEDROOM
- INTEGRAL GARAGE & OFF ROAD PARKING
- GARDENS
- SPACIOUS LIVING ACCOMMODATION
- DINING ROOM
- FITTED KITCHEN
- GAS CENTRAL HEATING
- CONVENIENT LOCATION

[www.kjtresidential.co.uk](http://www.kjtresidential.co.uk)



# 1 CROWN MEADOW, COALWAY, COLEFORD, GLOUCESTERSHIRE, GL16 7HF

**RARELY AVAILABLE ON THIS SMALL SOUGHT AFTER DEVELOPMENT, KJT RESIDENTIAL ARE DELIGHTED TO OFFER FOR SALE THIS FOUR BEDROOM DETACHED HOUSE BENEFITTING FROM AN INTEGRAL GARAGE AND OFF ROAD PARKING.**

Coalway is approximately 1/4 mile outside the town of Coleford.

The historic market town of Coleford is in the delightful Forest of Dean, close to the Wye Valley. Well located for all motorway links (M50 & M48 are within a 12 mile radius) yet enjoys a full range of local facilities to include: cinema, post office, banks, library, shops, 2 supermarkets, pubs and restaurants. Primary and secondary schooling with further education, leisure centre (at the college campus) and two separate golf courses. A wider range of facilities are also available throughout the Forest of Dean including an abundance of woodland and river walks. The Severn crossings and M4 towards London, Bristol and Cardiff are easily reached from this area along with the cities of Gloucester and Cheltenham for access onto the M5 and the Midlands.

Canopied entrance Porch to UPVC front door, latched door to -

**Entrance Hall:** Tiled floor, radiator.

**Downstairs Cloakroom:** Suite comprising low level W.C., sink unit, radiator, tiled floor, window.

Off the hall is -

**Lounge:** 16' 0" x 13' 9" (4.87m x 4.19m), Double glazed window to front, feature fireplace (potential for wood burner) having marble effect hearth with wood mantle over, T.V. point, radiator.



**Dining Room:** 10' 0" x 9' 0" (3.05m x 2.74m), Double glazed patio door to rear, radiator.

**Kitchen:** 16' 7" x 9' 11" (5.05m x 3.02m), Range of matching wall and base units providing ample worktop and storage space, one and a half bowl stainless steel sink unit with mixer tap, plumbing for dishwasher and automatic washing machine, built-in gas hob with extractor over and electric oven under. There is a side display unit, a tall larder unit, tiled splash-backs, tiled floor, radiator, wall mounted 'Glow-worm' gas combi-boiler supplying central heating and domestic hot water, window to rear and door to garden. Agent's Note: Ample room for kitchen table.



**Store Room:** Power points, door to -

**Integral Garage:** With power & lighting.

From Lounge, stairs to -

**First Floor Landing:** Access to loft which is part boarded and has power and light, airing cupboard.

**Master Bedroom: 19' 7" (narrowing to 17' 3") x 9' 10" (5.96m x 2.99m),** Built-in bedroom furniture including two double wardrobes, bedside tables and over-bed cupboard, double glazed window to front, radiator. En-suite - Comprising low level W.C., sink inset in a vanity unit, shower cubicle with 'Mira' shower, tiled floor and part tiled walls, wall mounted mirror with light over, extractor, window.

**Bedroom Two: 12' 0" x 9' 5" (3.65m x 2.87m),** Built-in double wardrobe, radiator, window to front.

**Bedroom Three: 10' 0" x 9' 5" (3.05m x 2.87m),** built-in double wardrobes, radiator, window to rear.

**Bedroom Four/Home Office: 11' 5" x 6' 5" (3.48m x 1.95m),** Radiator, window to front.

**Family Bathroom:** Suite comprising panelled bath with shower attachment, sink and W.C. in a vanity unit, built-in cupboard, radiator, tiled splash-backs, window.

**Outside:** To the front of the property is a drive providing off road parking, this leads to the garage. Leading to the front door there is a picket fence and paved parking area. To the front and side is a large lawned area with shrubs and fenced boundaries. The rear has a patio, lawn and part fenced/part walled boundaries. The rear garden (when the weather is good) has sun all day long. There is a garden shed and outside water supply.

**Services: All main services connected to the property. The heating system and services where applicable have not been tested.**

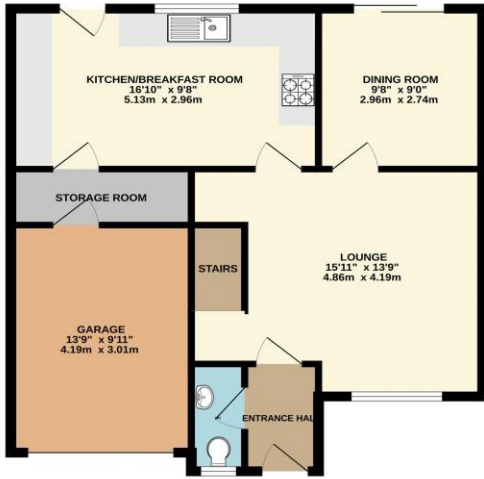


IMPORTANT INFORMATION: All measurements are approximate. We have not tested any fittings, appliances or services within this property and cannot verify them to be in working order or within the Vendor/s ownership. We have not verified the tenure of the property, the type of construction or the condition thereof. Intending Purchasers should make appropriate enquiries through their own solicitor and surveyor etc., prior to exchange of contracts.

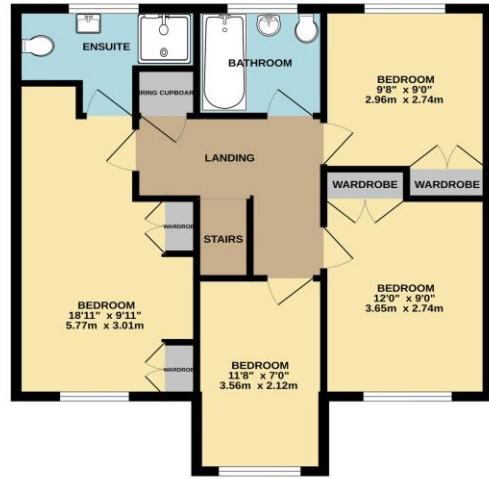
**01594 823033**



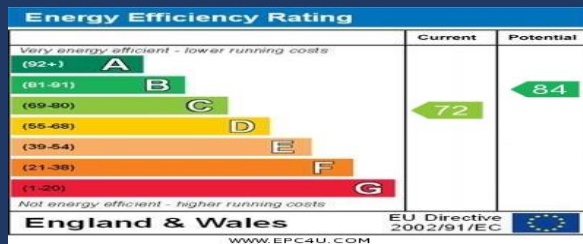
GROUND FLOOR  
671 sq.ft. (62.3 sq.m.) approx.



1ST FLOOR  
637 sq.ft. (59.2 sq.m.) approx.



TOTAL FLOOR AREA: 1308 sq.ft. (121.5 sq.m.) approx.  
Whilst every attempt has been made to ensure the accuracy of the floorplan contained here, measurements of doors, windows, rooms and any other items are approximate and no responsibility is taken for any error, omission or mis-statement. This plan is for illustrative purposes only and should be used as such by any prospective purchaser. The services, systems and appliances shown have not been tested and no guarantee as to their operability or efficiency can be given.  
Made with Metropix ©2023



PASSIONATE ABOUT  
*Property*  
SINCE 1982